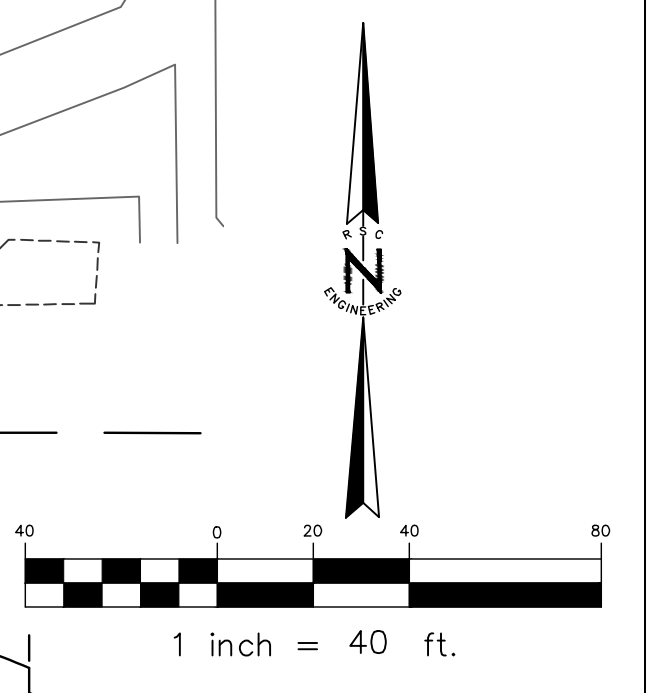
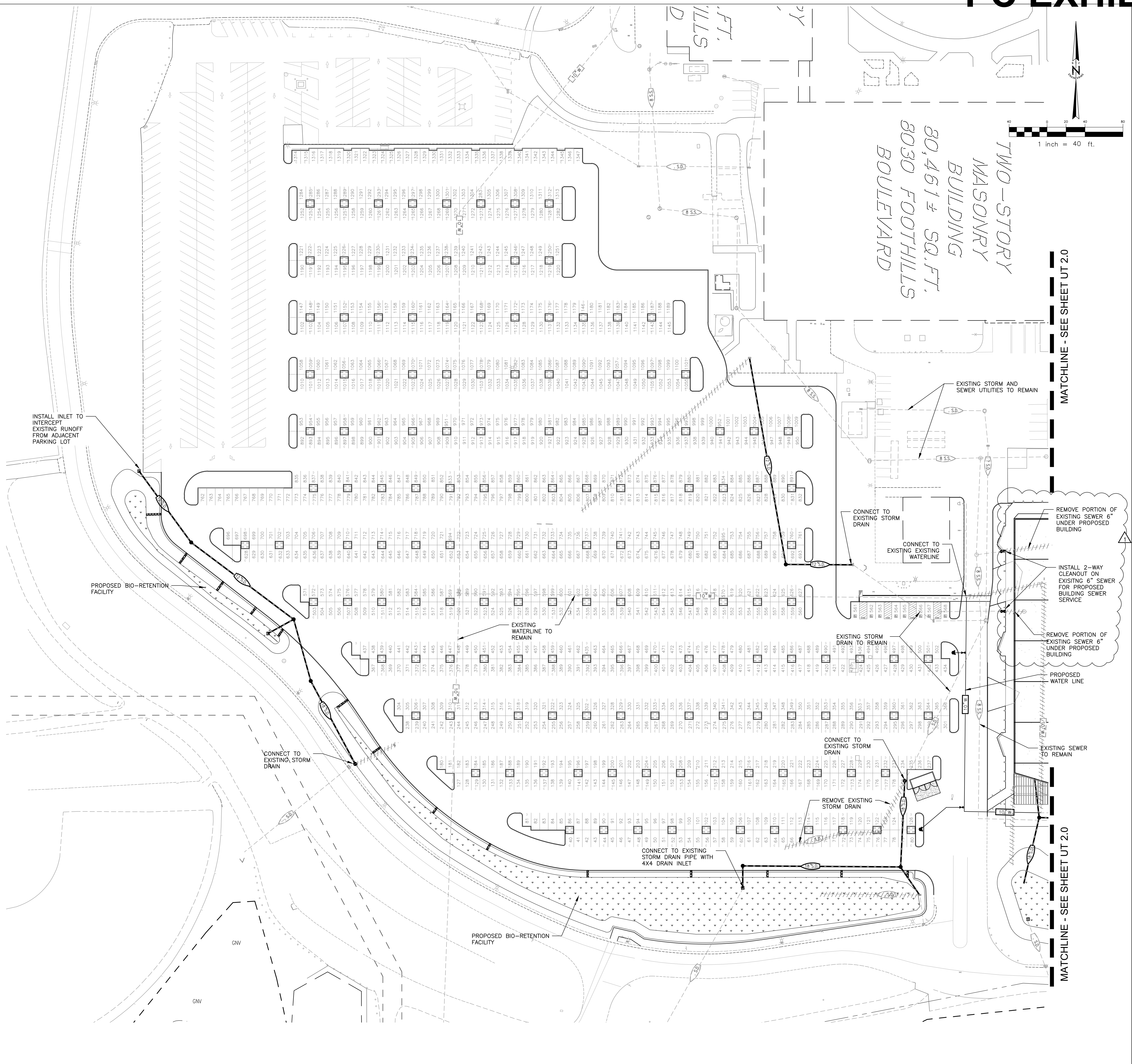


LEGEND	
	PROPOSED SANITARY SEWER
	EXISTING SANITARY SEWER
	PROPOSED STORM DRAIN
	EXISTING STORM DRAIN
	PROPOSED WATER LINE
	EXISTING WATER LINE
	PROPOSED WATER VALVE
	EXISTING WATER VALVE
	PROPOSED FIRE PROTECTION ASSEMBLY
	PROPOSED FIRE HYDRANT
	EXISTING FIRE HYDRANT
	PROPOSED R.P. BACKFLOW PREVENTOR
	PROPOSED SANITARY SEWER MANHOLE
	EXISTING SANITARY SEWER MANHOLE
	PROPOSED SANITARY SEWER CLEANOUT
	EXISTING SANITARY SEWER CLEANOUT
	PROPOSED STORM DRAIN MANHOLE
	EXISTING STORM DRAIN MANHOLE
	PROPOSED STORM DRAIN INLET
	EXISTING STORM DRAIN INLET



TWO-STORY  
MASONRY  
BUILDING  
80,461 ± SQ. FT.,  
8030 FOOTHILLS  
BOULEVARD

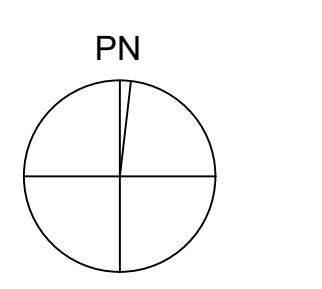


MATCHLINE - SEE SHEET UT 2.0

MATCHLINE - SEE SHEET UT 2.0

Copyright 2020 Brick Architecture and Interiors, Inc. All Rights Reserved. These Plans and/or Specifications are intended for the sole benefit of the clients of Brick Architecture and Interiors, Inc. and may not be used, revised, copied, or reproduced in any form without the express written consent of Brick Architecture and Interiors, Inc.

20.03.17	design review	rev 1
rev	date	issue



8000 Foothills Blvd., Roseville, CA  
project number: 135-004  
plot date: 00/00/2020  
scale: as noted  
date:

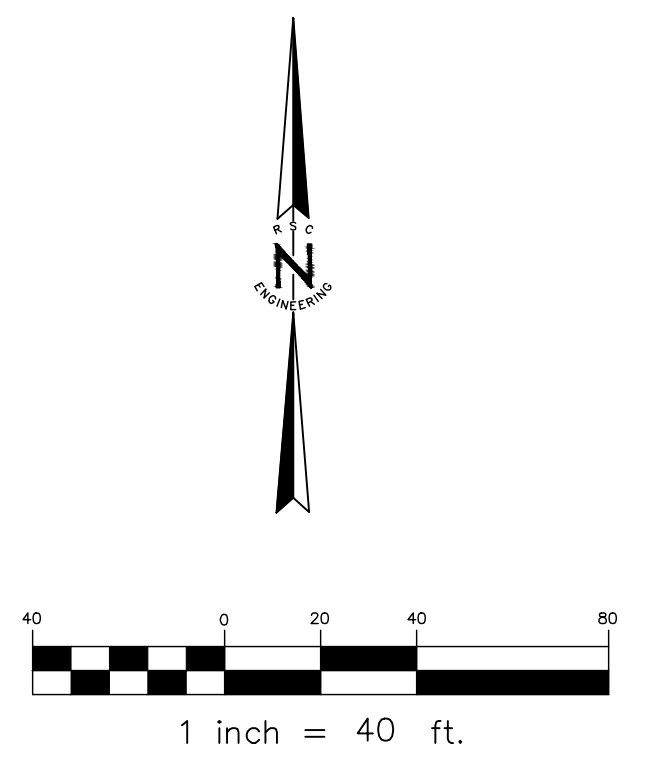
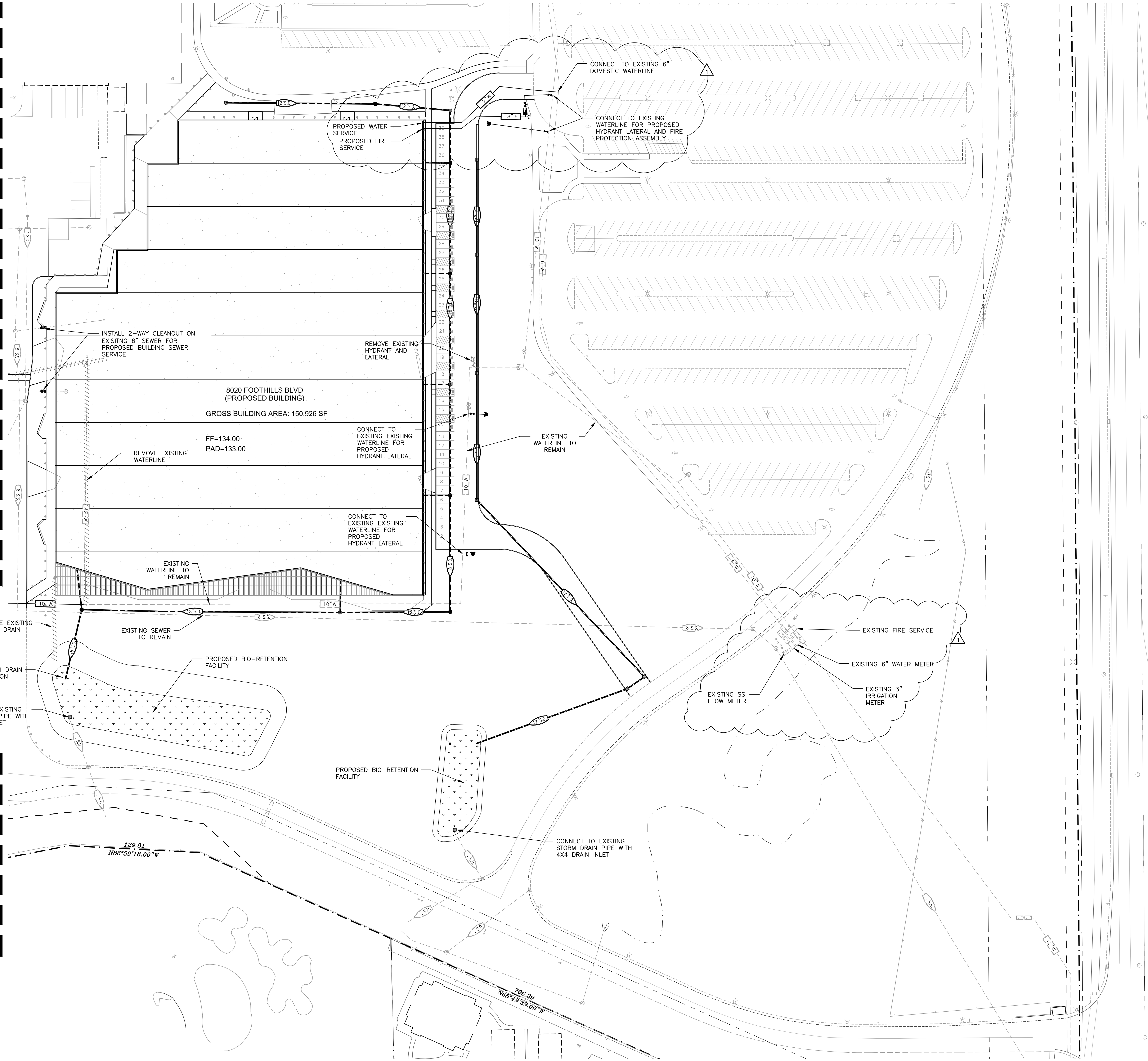
DESIGN REVIEW  
PRELIMINARY  
UTILITY  
PLAN

**LEGEND**

	PROPOSED SANITARY SEWER
	EXISTING SANITARY SEWER
	PROPOSED STORM DRAIN
	EXISTING STORM DRAIN
	PROPOSED WATER LINE
	EXISTING WATER LINE
	PROPOSED WATER VALVE
	EXISTING WATER VALVE
	PROPOSED FIRE PROTECTION ASSEMBLY
	PROPOSED FIRE HYDRANT
	EXISTING FIRE HYDRANT
	PROPOSED R.P. BACKFLOW PREVENTOR
	PROPOSED SANITARY SEWER MANHOLE
	EXISTING SANITARY SEWER MANHOLE
	PROPOSED SANITARY SEWER CLEANOUT
	EXISTING SANITARY SEWER CLEANOUT
	PROPOSED STORM DRAIN MANHOLE
	EXISTING STORM DRAIN MANHOLE
	PROPOSED STORM DRAIN INLET
	EXISTING STORM DRAIN INLET

MATCHLINE - SEE SHEET UT 1.0

MATCHLINE - SEE SHEET UT 1.0



Copyright 2020 Brick Architecture and Interiors, Inc. All Rights Reserved. These Plans and/or Specifications are intended for the sole benefit of the clients of Brick Architecture and Interiors, Inc. and may not be used, revised, copied, or reproduced in any form without the express written consent of Brick Architecture and Interiors, Inc.

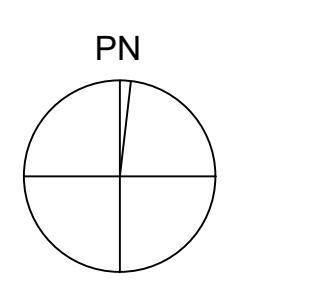
**brick**

ARCHITECT  
brick  
405 14th Street, Suite 500  
Oakland, CA 94612  
www.brick-inc.com

CLIENT  
8000 Foothills LLC  
c/o Strada Investment Group  
101 Mission Street, Suite 420  
San Francisco, CA 94105

CIVIL ENGINEER  
RSC Engineering  
2250 Douglas Blvd., Suite 150  
Roseville CA 95661  
916.788.2884  
www.rsc-engr.com

20.03.17	design review	rev 1
	date	
	issue	



8000 Foothills Blvd, Roseville, CA  
project number: 135-004  
plot date: 00/00/2020

scale: as noted  
date:

**DESIGN REVIEW**  
**PRELIMINARY**  
**UTILITY**  
**PLAN**

**UT-2.0**